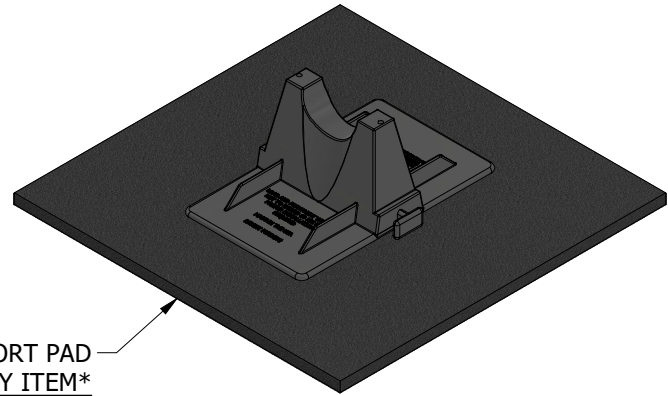
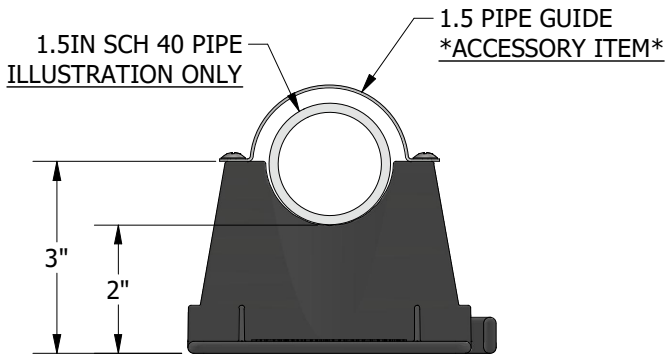
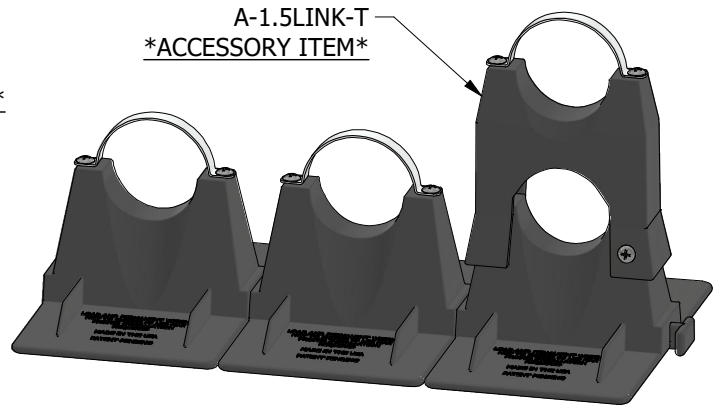
**TOP VIEW**12x12 SUPPORT PAD
*ACCESSORY ITEM***ISOMETRIC VIEW****FRONT VIEW****ASSEMBLY VIEW****ACCESSORIES**

- A-1.5LINK-T (TRUSS)
- 1.5 Pipe Guide
- 12x12 Support Pad
- Eternabond® 2-Sided Tape

PRODUCT DESCRIPTION

A pipe support used to support roof-mounted gas pipes, electrical conduit, solar piping and other mechanical piping.

Unique design absorbs thermal expansion and contraction of pipes thus preventing damage to the roof membrane. Pipe to rest in a U-Shaped cradle situated in a polycarbonate resin base.

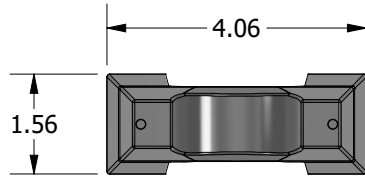
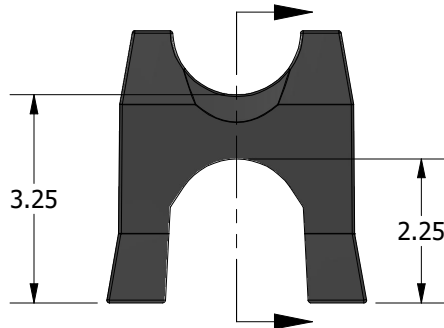
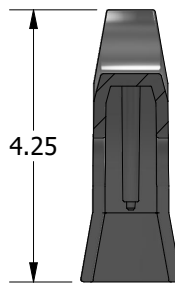
Bases are designed to interlock side to side to provide support for multiple lines in horizontal direction and/or utilize 1.5LINK Truss accessory for multiple lines in the vertical direction.

KEY INFORMATION

- Support is optimized to carry up to three 1-1/2 in pipes in a stack using 1.5LINK Truss accessory.
- Maximum pipe OD for the support is 1.9"
- Clearance height for the pipe is 2IN for the support, and 3 additional inches for each Truss accessory
- Maximum Load is 70 lbs based on 3.0 PSI to roof deck. Even load is required.
- Unit Weight: 0.3 lbs.
- Recommended spacing is not to exceed 7ft centers depending on the load.
- 20 Year Warranty

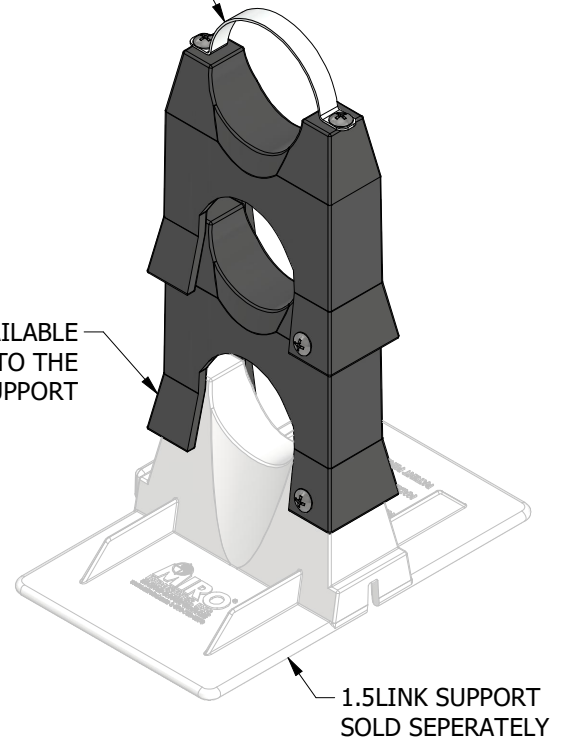
MATERIAL INFORMATION

- Base Material: Polycarbonate

**TOP VIEW****FRONT VIEW****SECTION VIEW**

THE 1.5LINK-TRUSS IS AVAILABLE
AS AN ACCESSORY ITEM TO THE
1.5LINK BASE SUPPORT

1.5 PIPE GUIDE
ACCESSORY ITEM

**ASSEMBLY VIEW**

1.5LINK SUPPORT
SOLD SEPERATELY

PRODUCT DESCRIPTION

The 1.5LINK-TRUSS is designed to expand the vertical use-ability of the 1.5LINK. It is a Polycarbonate Resin accessory intended to stack directly on top of the 1.5LINK and provide cradle-type support for additional 1.5OD pipes.

Manufacturer recommends a maximum of two (2) Truss accessories to be used per 1.5LINK base.

Manufacturer recommends using 1/4 self tapping screw (or similar) to securely fasten Truss accessories to Base or other Truss accessories.

KEY INFORMATION

- Support is optimized to carry up to 1-1/2 in pipe
- Maximum pipe OD for the support is 1.9"
- Clearance height for the pipe is 2IN for the base support, and 3 additional inches for each Truss accessory.
- Maximum Load of the 1.5LINK Base is 70 lbs based on 3.0 PSI to roof deck. Even load is required.
- Unit Weight: 0.3 lbs.
- Recommended spacing is not to exceed 7ft centers depending on the load.
- 20 Year Warranty

MATERIAL INFORMATION

- Base Material: Polycarbonate