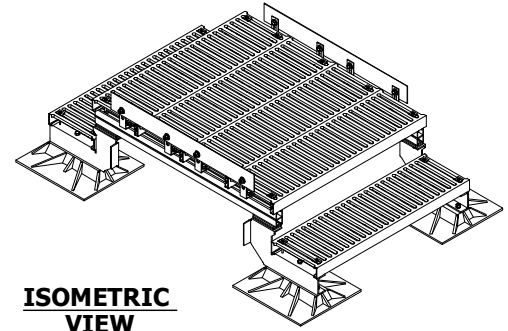
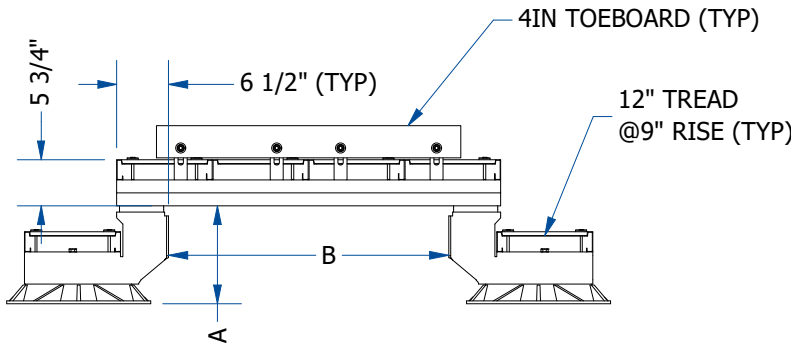


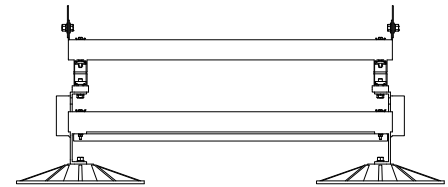
TOP VIEW



ISOMETRIC VIEW



FRONT VIEW



SIDE VIEW

ACCESSORIES

- MIRO support pad
- Eternabond® 2-sided tape

PRODUCT DESCRIPTION

The MIRO J-Stringer crossover is constructed with our patent pending J-Stringer brackets, our 16"x18" polycarbonate bases for proper load distribution, 12" non-slip planking, and 1-5/8" 12ga. strut framing.

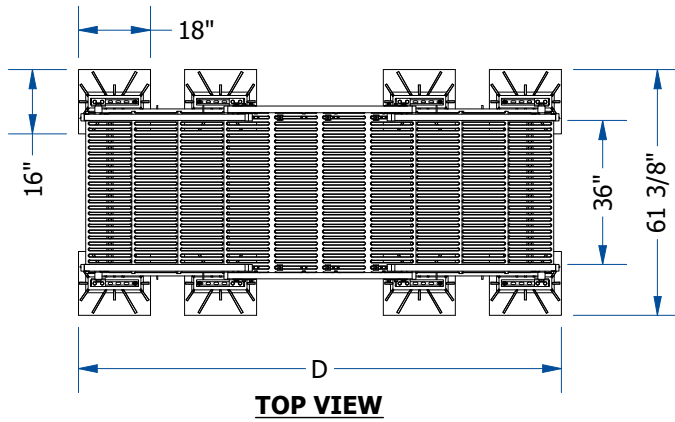
MIRO J-Stringer crossovers are designed to provide a set stair pitch of a 9" rise by an 11-1/2" run. The system also provides platform length adjustability in 12" increments from 48" long to 72" long.

MIRO J-Stringer crossover structures are designed to meet OSHA 1910 Subpart D requirements for walking/working surfaces.

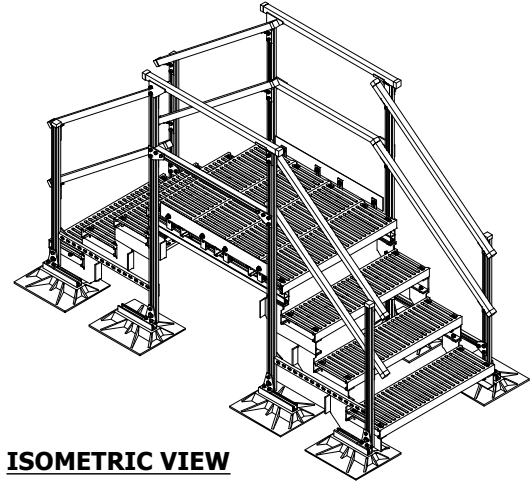
Anchorage of the J-Stringer crossover to the building structure may be required for applicable lateral and uplift loading.

J-STRINGER-CO (INCHES)				
	A	B	C	D
MODEL NAME	CLEARANCE SPAN	CLEARANCE HEIGHT	STEP QUANTITY	TOTAL LENGTH
C-35x12	35	12-1/4	1	75-1/2
C-47x12	47	12-1/4	1	87-1/2
C-59x12	59	12-1/4	1	99-1/2
C-35x21	35	21-1/4	2	98-1/8
C-47x21	47	21-1/4	2	110-1/8
C-59x21	59	21-1/4	2	122-1/8

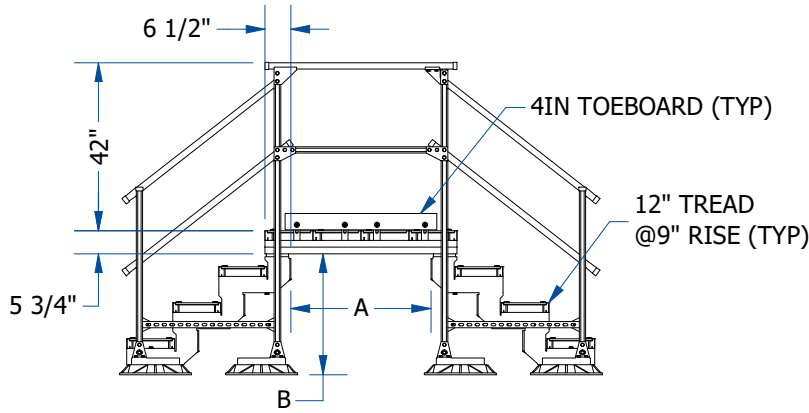
MIRO Standard Crossovers are shipped partially assembled. (Field assembly is required)



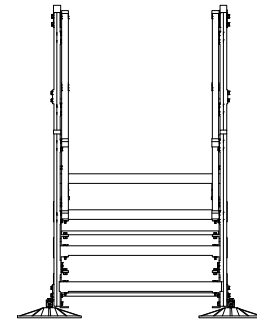
TOP VIEW



ISOMETRIC VIEW



FRONT VIEW



SIDE VIEW

ACCESSORIES

- MIRO support pad
- Eternabond® 2-sided tape

PRODUCT DESCRIPTION

The MIRO J-Stringer crossover is constructed with our patent pending J-Stringer brackets, our 16"x18" polycarbonate bases for proper load distribution, 12" non-slip planking, and 1-5/8" 12ga. strut framing.

MIRO J-Stringer crossovers are designed to provide a set stair pitch of a 9" rise by an 11-1/2" run. The system also provides platform length adjustability in 12" increments from 48" long to 72" long.

MIRO J-Stringer crossover structures are designed to meet OSHA 1910 Subpart D requirements for walking/working surfaces.

Anchorage of the J-Stringer crossover to the building structure may be required for applicable lateral and uplift loading.

J-STRINGER-CO-HANDRAIL (INCHES)

	A	B	C	D
MODEL NAME	CLEARANCE SPAN	CLEARANCE HEIGHT	STEP QUANTITY	TOTAL LENGTH
C-35x30H	35	30-1/4	3	120-3/4
C-47x30H	47	30-1/4	3	132-3/4
C-59x30H	59	30-1/4	3	144-3/4
C-35x39H	35	39-1/4	4	143-3/4
C-47x39H	47	39-1/4	4	155-3/4
C-59x39H	59	39-1/4	4	167-3/4
C-35x48H	35	48-1/4	5	166-3/4
C-47x48H	47	48-1/4	5	178-3/4
C-59x48H	59	48-1/4	5	190-3/4

MIRO Standard Crossovers - Handrail are shipped partially assembled. (Field assembly is required)