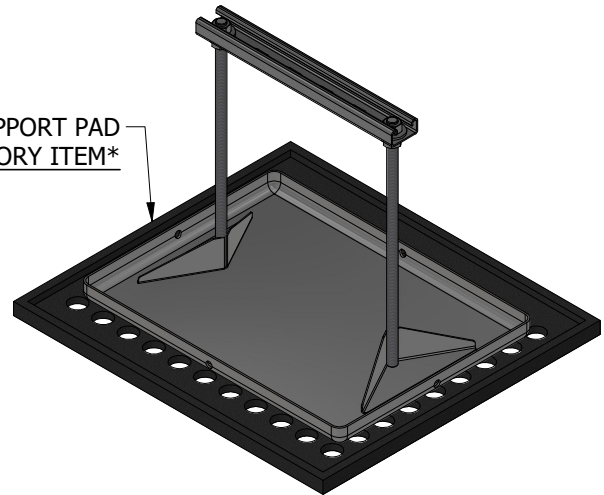
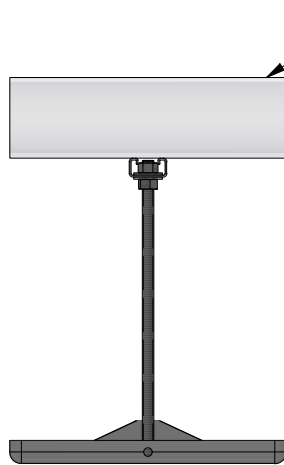


TOP VIEW

16x18 SUPPORT PAD
ACCESSORY ITEM

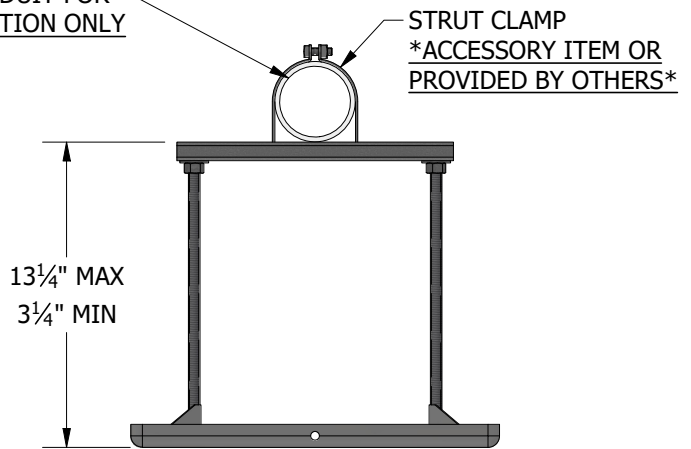


ISOMETRIC VIEW



FRONT VIEW

PIPE/CONDUIT FOR
ILLUSTRATION ONLY



SIDE VIEW

STRUT CLAMP
*ACCESSORY ITEM OR
PROVIDED BY OTHERS*

13 1/4" MAX
3 1/4" MIN

ACCESSORIES

- Strut Clamp - Order to Pipe O.D.
- 16" x 18" Support pad
- Eternabond® 2-sided tape

PRODUCT DESCRIPTION

A pipe support with "strut" used to support roof-mounted electrical conduit, solar piping, gas pipes and other mechanical piping. Pipes rest on a 12" length of strut which is mounted on the base. The pipes can be fastened by using the appropriate pipe clamp.

KEY INFORMATION

- Designed to support conduit (ganged) cable trays or other mechanical piping
- Adjustable from the factory set maximum height of 13-1/4" down to a minimum height of 3-1/4"
- Maximum load is 524 lbs. (3.0 psi) Make certain each support is properly elevated to evenly distribute weight at all support locations
- Unit Weight: 9.88 lbs.
- Recommended spacing is not to exceed 10' centers depending upon the load

MATERIAL INFORMATION

- Base Material: 16 ga. 304 SS
- 1/2"-13 304 SS All-Thread
- 13/16"x1-5/8" 14 ga. HDG slotted strut
- HDG hardware